

# ECOLIV<sup>®</sup>



## EcoLiving range

**Our versatile EcoLiving range is perfect for a family forever home, a modern downgrade or an attractive holiday house with all the creature comforts.**

### **Living in sustainable style.**

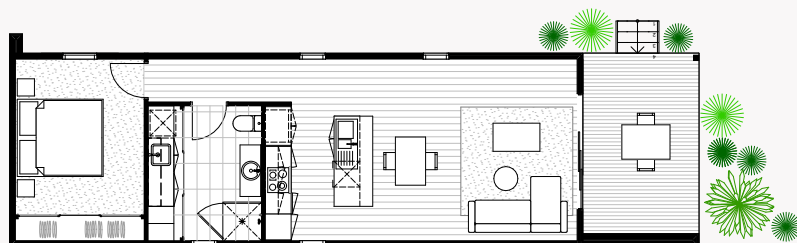
With seven inspiring floor plans to choose from, sustainable living has never looked this good.

Like all Ecoliv homes, our EcoLiving range is designed for living harmoniously with the natural Australian environment. Live in comfort with hallmarks of sophisticated design such as 100 percent wool carpets and Tasmanian oak engineered flooring plus sustainable features like a grid connected solar power system and 10,000 litre water tank.

Explore our EcoLiving designs and to find the right home for you.



1A



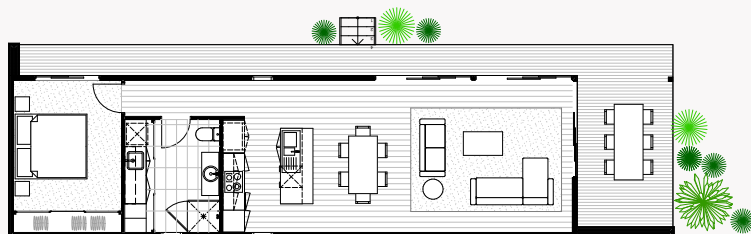
Under  
60m<sup>2</sup>

### EcoLiving<sup>1A</sup>

Modules	1
Area	60m <sup>2</sup>
Deck	12.15m <sup>2</sup>
Length	16.05m
Width	4.5m
Height	3.4m
Price	\$272,000 + GST



1B



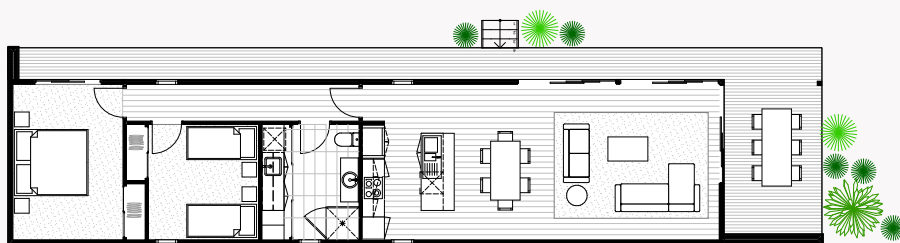
-  1
-  1
-  1

## EcoLiving<sup>1B</sup>

Modules	2
Area	71.1m <sup>2</sup>
Deck	27.73m <sup>2</sup>
Length	18.5m
Width	5.4m
Height	3.4m
Price	\$376,000 + GST



2A



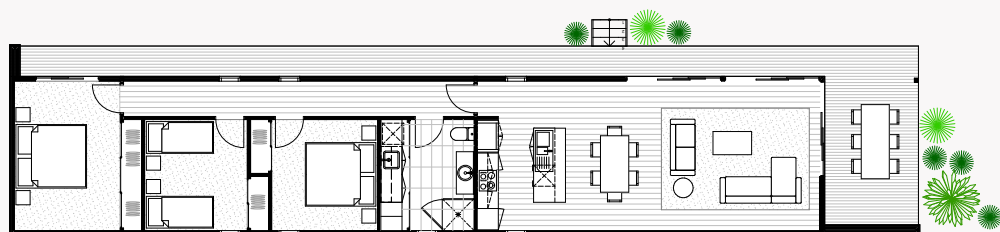
 2
  1
  1

## EcoLiving<sup>2A</sup>

Modules	2
Area	87.7m <sup>2</sup>
Deck	30.88m <sup>2</sup>
Length	22.19m
Width	5.4m
Height	3.4m
Price	\$431,000 + GST



**3A**



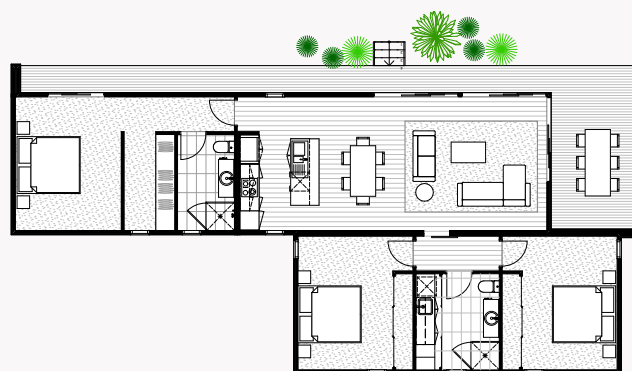
 3
  1
  1

**EcoLiving<sup>3A</sup>**

Modules	2
Area	103.9m <sup>2</sup>
Deck	33.96m <sup>2</sup>
Length	25.79m
Width	5.4m
Height	3.4m
Price	\$477,000 + GST



**3B**



 3
  2
  1

**EcoLiving<sup>3B</sup>**

Modules	<b>3</b>
Area	<b>123.45m<sup>2</sup></b>
Deck	<b>37.83m<sup>2</sup></b>
Length	<b>19.385m</b>
Width	<b>9.81m</b>
Height	<b>3.4m</b>
Price	<b>\$537,000 + GST</b>



**EcoLiving<sup>3C</sup>**

Modules	<b>3</b>
Area	<b>113.58m<sup>2</sup></b>
Deck	<b>37.24m<sup>2</sup></b>
Length	<b>18.13m</b>
Width	<b>15.2m</b>
Height	<b>3.4m</b>
Price	<b>\$552,00 + GST</b>

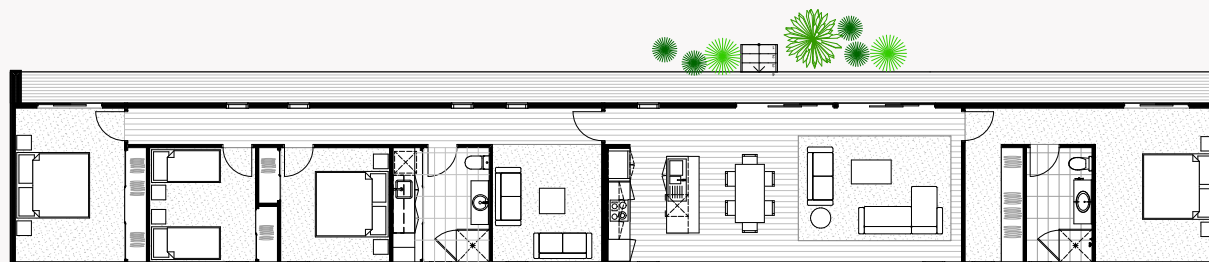
**3C**



 3
  2
  1



4A



 4
  2
  1

## EcoLiving<sup>4A</sup>

Modules	3
Area	149.8m <sup>2</sup>
Deck	37.83m <sup>2</sup>
Length	33.29m
Width	5.4m
Height	3.4m
Price	\$593,000 + GST

# Colour palettes

Our thoughtfully curated interiors are inspired by nature to elevate warmth, calm and connection in every home.

## Coastal Calm

Light, soft and effortlessly fresh, Coastal Calm evokes the cool breeziness of the Australian coast. Pale neutrals, gentle timber tones and airy finishes create interiors that feel open, relaxed and timeless - ideal for those drawn to simplicity and light-filled living.



## Hinterland Haze

Inspired by the Australian hinterland, Hinterland Haze is a grounded, biophilic palette rooted in regenerative design. Muted eucalyptus greens, misty sage, warm stone and subtle charcoal accents echo the quiet rhythms of the landscape, creating interiors that feel calm, restorative and deeply connected to place.



# Colour palettes

ECOLIV®

Our thoughtfully curated interiors are inspired by nature to elevate warmth, calm and connection in every home.

## Urban Zen

Moody yet refined, Urban Zen is defined by dusky shadows and deeper tonal contrasts. This palette delivers sleek sophistication with a subtle edge, capturing the seductive allure of the urban jungle while maintaining a sense of calm and control



## Sunbaked Terra

Celebrating the sun-drenched heart of Australia, Sunbaked Terra is warm, earthy and quietly confident. Layers of clay terracotta, sun-warmed neutrals and rich earthen tones create nurturing interiors shaped by the land and designed to age gracefully over time.



# Standard inclusions

## SITE & FOUNDATIONS

- Footings to Class 'M' soil classification
- 450mm diameter bored pier concrete pad
- 90x90mm galvanised steel stumps to 400mm (H)
- NCC-compliant termite treatment

## SERVICES

- 5.28kW grid connect solar power system to +3 bed homes\*
- 3.08kW grid connect solar power system to 2 bed homes\*
- 10,000-litre round poly water tank connected to toilet\*
- 180-litre heat pump hot water system to 1 bed homes
- 270-litre heat pump hot water system to +2 bed homes
- Connection of services available from building perimeter

## CONSTRUCTION

- NCC-compliant structure (local, state and national compliance)
- Plantation pine frames and trusses
- Bulk insulation – R0.2 Aircell roof blanket, ceiling R6, walls R2.5, floor R6 (subfloor sealed)
- Vapour-permeable membrane wall wrap
- BAL (Bushfire Attack Level) 12.5 construction
- Wind rating to N2

## EXTERIOR

- Trimdeck profile Colorbond-colour roofing and accessories
- Weatherex Weathergroove Smooth 300mm zero carbon cladding
- Haymes low-VOC paint finish to all external surfaces – one colour
- AWS 2400mm (H) powder-coated aluminium double-glazed windows and sliding door units
- Fly screens to all openable windows and sliding doors
- 920mm solid core entry door with feature handle (Design specific)
- One garden tap connected to water tank
- Australian hardwood decking and external steps as detailed in standard floorplan

## INTERIOR

- 3100–2550mm ceiling height to living (Design specific)
- 2550mm ceiling height to all other rooms
- 10mm plasterboard to walls and ceilings
- Villaboard to tiled areas
- 67mm primed pine square-set skirting and architraves
- Haymes low-VOC paint finish to internal surfaces (one colour)
- Redicote 2340mm hinged internal doors
- Gainsborough brushed chrome lever door furniture, cushion door stops
- Tasmanian Oak 14.3mm engineered timber flooring with low-VOC scratch-resistant finish

## KITCHEN

- 20mm YDL Mineral Stone recycled benchtop and splashback; 40mm to island bench
- Custom Laminex AbsoluteMatte/AbsoluteGrain finish joinery
- Fisher & Paykel 900mm/600mm electric oven\*\*
- Fisher & Paykel 900mm/600mm cooktop\*\*
- Fisher & Paykel 900mm/600mm integrated rangehood (externally ducted)\*\*
- Stainless steel sink with drainer
- WELS-rated brushed nickel sink mixer tap
- Two-compartment recycling bin system and cutlery tray insert

## LAUNDRY / PANTRY

- 20mm YDL Mineral Stone recycled benchtop
- Custom Laminex AbsoluteMatte/AbsoluteGrain finish joinery
- Feature tile splashback
- Stainless steel insert trough
- WELS-rated brushed nickel finish sink mixer tap
- Chrome-finish hot and cold tap fittings for washing machine
- 600x300mm ceramic floor tile (Laundry)
- In-drawer laundry hamper (Design specific)

## BATHROOMS

- 20mm YDL Mineral Stone recycled benchtops
- Custom Laminex AbsoluteGrain finish joinery
- Solid surface basin
- Solid surface bath (Design specific)
- Waterproofing to wet areas
- 600x300mm ceramic floor and wall tiles to wet areas; full-height tiling to 3 walls
- 600x300mm ceramic tiled shower base set in floor
- 2000mm (H) Frameless/Semi-frameless shower screens
- WELS-rated brushed nickel taps, shower and accessories
- Wall-faced WELS-rated toilet suite

## POWDER ROOM

- 600x300mm ceramic floor tile
- Wall-faced WELS-rated toilet suite
- Solid surface wall hung basin WELS-rated brushed nickel tap
- 1x exhaust fan

## BEDROOMS

- Custom Laminex AbsoluteMatte/AbsoluteGrain finish robe joinery (Design specific)
- Access Space Maker robes (Design specific)
- Bremworth 100% wool carpet

## STUDY

- Custom Laminex AbsoluteMatte/AbsoluteGrain finish joinery
- Metabox filing drawers

## LIGHTING – INTERNAL

- LED strip lighting to kitchen, pantry/laundry, study, bedroom study nook (Design specific)
- 6x 9W LED downlights to kitchen/dinning/living
- 1x 9W LED downlight to study
- 2x 9W LED downlights to pantry/laundry
- 1x 9W LED downlight to powder room
- 1x 9W LED downlight to hallway per 2lm

## ELECTRICAL – INTERNAL

- Smoke detectors hardwired with battery backup
- 1x exhaust/light/heater to bathrooms
- 1x LED backlit mirror with magnifier and demister to bathrooms
- 1x ceiling fan with LED light to bedroom
- 4x double GPOs to kitchen
- 3x double GPOs to living/dining
- 2x double GPOs to laundry/pantry
- 1x double GPO to bathrooms
- 2x double GPOs to bedrooms/rumpus
- 2x double GPOs to study
- 1x TV point/data point to living
- 1x TV point/data point to study

## LIGHTING – EXTERNAL

- 1x wall light
- 1x wall sensor light
- 2x downlights to alfresco

## ELECTRICAL – EXTERNAL

- 1x isolator switch to HWS
- 1x double GPO to water tank pump
- 1x double GPO to alfresco

## PEACE OF MIND

- 7-year Home owners warranty insurance
- 3-month Ecoliv rectification/maintenance

## EXCLUSIONS

- Driveway construction
- Vegetation removal
- Excavation
- New service connections
- Connection of services from building perimeter to infrastructure mains
- Pre-construction design fees
- Nominated consultant fees
- Approval application fees
- Transport/delivery fees

## PRE-CONSTRUCTION

- The following items are NOT included in construction costs. Pricing for the Pre-Construction Stage items are site and project dependent.
- Pre-construction design and documentation
  - Town planning/Development approval and Building permit documentation
  - Town planning/Development approval and Building permit application fees
  - Soil test fees
  - Energy rating fees
  - Bushfire attack level assessment fees
  - Engineering drawings and report
  - Site re-survey fees
  - External consultant reporting fees

\*Secondary dwellings, Extension projects and projects under 60m<sup>2</sup> do not include solar power systems or water tanks.

\*\*600mm appliances 1-2 bed homes  
900mm appliances 3+ bed homes

For custom designs, we provide a detailed construction price estimate on design resolution, ensuring accuracy in materials, specifications, and site requirements. This process allows us to align costs with your budget and vision.

Please note: Ecoliv Standard Inclusions and Materials Specifications are subject to availability at the time of construction and can vary for individual sites. These Standard Inclusions are valid for a 3-month period from the date of engagement of the Pre-Construction Stage and are subject to change pending supplier availability.

# ECOLIV<sup>®</sup>

## Contact us

The EcoHub Display Centre  
1114 Bass Hwy, The Gurdies  
VIC 3984

Phone +61 (3) 5672 5196  
Email [info@ecoliv.com.au](mailto:info@ecoliv.com.au)  
Visit [ecoliv.com.au](http://ecoliv.com.au)

## Join our community

