



**ECOLIV**

## Designed for today with tomorrow in mind

Our new EcoGeneration range presents the pinnacle of inspired modular home design and sustainable living. Featuring 15 unique floor plans to choose from, our EcoGeneration range offers sophisticated design without compromising the natural environment.

Like all Ecoliv homes, our EcoGeneration range is designed for living harmoniously with the natural Australian environment. Taking sustainability to the next level, our new range is climate responsive and operationally carbon neutral. The host of eco-friendly features includes, but is not limited to, a 5.55kw grid-connected solar power system, 10,000 litre water tank, and 250 litre energy efficient hot water system as standard.

Thoughtful design and architectural features support the comfort and wellbeing of the building's occupants, deliver long-term energy efficiency, and protect the natural environment for future generations.

Explore our EcoGeneration designs and floor plans to find the right design for you. Choose from two, three or four bedrooms with a selection of modules including additional living areas, bedrooms, bathrooms and workspaces to suit your family (whatever the size).

# EcoGeneration range

Thoughtfully designed, functional and light-filled, our carbon neutral EcoGeneration range scales to suit varying household sizes and occupant needs. From growing children to visiting family or working from home to downsizing, each home allows you to live in comfort, with less waste.

EcoGeneration

# 2 Bedroom floor plans

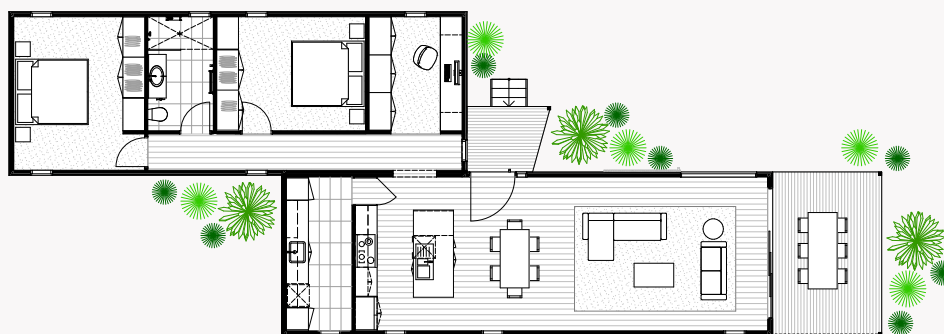
2A



### EcoGeneration<sup>2A</sup>

Modules	2
Area	117.05m <sup>2</sup>
Deck	17.19m <sup>2</sup>
Length	16.5m
Width	17.01m
Height	3.8m
Price	\$586,000 + GST

2B

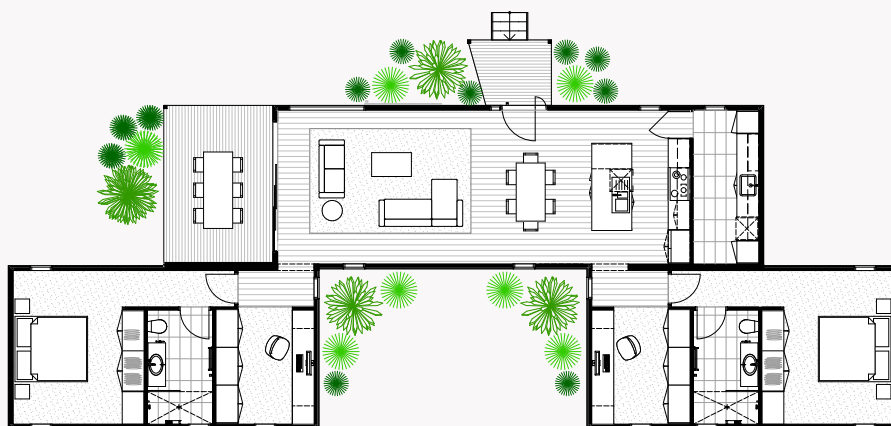


### EcoGeneration<sup>2B</sup>

Modules	2
Area	116.99m <sup>2</sup>
Deck	17.19m <sup>2</sup>
Length	24m
Width	8.91m
Height	3.8m
Price	\$582,000 + GST



2C



### EcoGeneration<sup>2C</sup>

Modules	3
Area	137.15m <sup>2</sup>
Deck	17.19m <sup>2</sup>
Length	24.47m
Width	8.91m
Height	3.8m
Price	\$679,000 + GST



EcoGeneration

# 3 Bedroom floor plans



3A

ECOLIV®



### EcoGeneration<sup>3A</sup>

Modules	3
Area	148.68m <sup>2</sup>
Deck	17.19m <sup>2</sup>
Length	24.72m
Width	8.91m
Height	3.8m
Price	\$687,000 + GST



3B

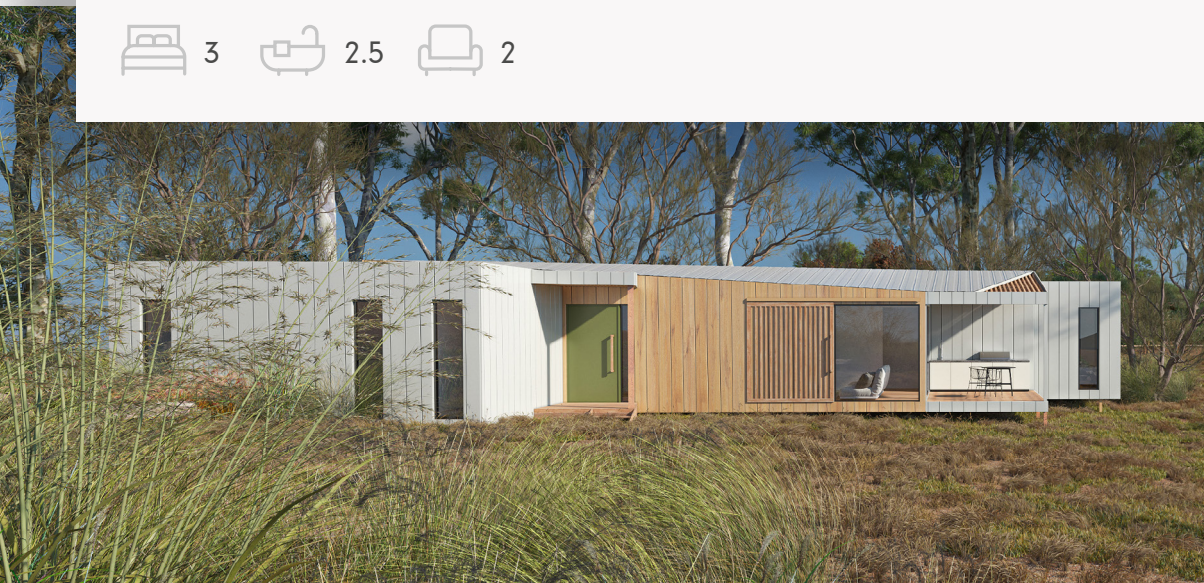
ECOLIV<sup>®</sup>



 3  2.5  2

### EcoGeneration<sup>3B</sup>

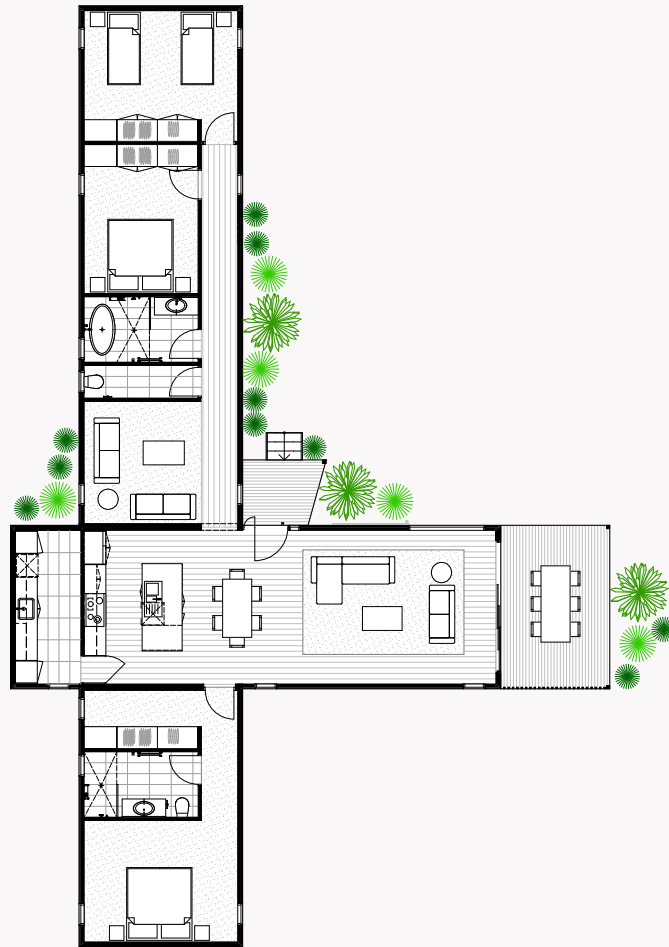
Modules	3
Area	156.73m <sup>2</sup>
Deck	17.19m <sup>2</sup>
Length	21.50m
Width	13.32m
Height	3.8m
Price	\$713,000 + GST





3C

ECOLIV®



3 2.5 2

### EcoGeneration<sup>3C</sup>

Modules	3
Area	157.14m <sup>2</sup>
Deck	17.19m <sup>2</sup>
Length	16.50m
Width	25.92m
Height	3.8m
Price	\$726,000 + GST



3D



### EcoGeneration<sup>3D</sup>

Modules	3
Area	163.08m <sup>2</sup>
Deck	17.19m <sup>2</sup>
Length	25.95m
Width	8.91m
Height	3.8m
Price	\$752,000 + GST



EcoGeneration

# 4 Bedroom floor plans

4A



### EcoGeneration<sup>4A</sup>

Modules	3
Area	172.05m <sup>2</sup>
Deck	17.19m <sup>2</sup>
Length	26m
Width	13.32m
Height	3.8m
Price	\$755,000 + GST

 4
  2.5
  2

4B



### EcoGeneration<sup>4B</sup>

Modules	3
Area	173.35m <sup>2</sup>
Deck	17.19m <sup>2</sup>
Length	25.11m
Width	20.91m
Height	3.8m
Price	\$779,000 + GST

 4
  2.5
  2



# Standard inclusions

ECOLIV®

## EcoGeneration range

### ENERGY EFFICIENCY / SUSTAINABILITY

- Operationally carbon positive
- 7 Star energy rating (via site specific passive solar design recommendations)
- 5.5 kW grid connect solar power system\*
- 10,000 litre poly water tank connected to dishwasher and toilet\*
- 270 litre heat pump hot water system
- Sealing with vapour permeable membrane
- Zero carbon footprint Weathertex cladding
- Double glazed argon filled aluminium windows and sliding doors
- Low VOC paints and sealers
- Low VOC custom cabinetry
- WELS rated plumbing fixtures
- LED downlights
- Bulk insulation - R1.5 Aircell roof blanket, ceiling R6 batts, walls R2.5, floor R6. (subfloor sealed)

### SITE & FOUNDATIONS

- Footings (to class 'M' soil classification)
- 600mm diameter bored pier concrete pad with galvanised steel stumps to 400mm high
- Connection of services available from building perimeter
- NCC termite treatment

### EXTERIOR

- NCC compliant structure (local, state and national compliance)
- Plantation pine frames and trusses
- Trimdeck profile colorbond colour roofing and accessories
- Zero carbon footprint Weathertex cladding
- Australian made Haymes Low VOC paint finish to all external surfaces (one colour)
- AWS 2400mmH powder coated aluminium double-glazed windows and sliding door units
- Fly screens to all openable windows and sliding doors

- 1020 solid core entry door with feature handle
- One garden tap connected to water tank
- BAL (Bushfire Attack Level) 12.5 construction
- Wind rating to N2
- Australian hardwood decking + external steps as detailed in floorplan

### INTERIOR

- 3100mm max ceiling height to living module with timber lined feature ceiling
- 2550mm max ceiling height to all other rooms
- 10mm plasterboard to walls and ceilings
- Insulation to external walls, floors and ceilings
- Eazypine 67mm square set skirting and architraves
- Villaboard (water resistant) to bathroom
- Redicote 2340mm hinged internal doors with brushed chrome lever door furniture
- Cushion door stops to all doors opening on to walls
- 2500mm joinery built-in robes with shelving, hanging rail and study nook to bedrooms
- 100% wool carpet to bedrooms
- Tasmanian Oak 14.3mm engineered timber flooring with low VOC scratch resistant finish
- Australian made Haymes low VOC paint finish to all internal surfaces (one colour)

### KITCHEN

- 20mm recycled glass benchtops
- Low VOC custom cabinetry
- Fisher & Paykel 900cm 100L 9 Function Electric Oven
- Fisher & Paykel 900mm Induction cooktop
- Fisher & Paykel 900mm Integrated Range Hood (externally ducted)
- Stainless steel sink with drainer
- Phoenix taps WELS rated water saving brushed nickel flick mixer
- Tiled splashback
- Australian hardwood chopping block

- 2 compartment recycling bin system and cutlery tray insert

### LAUNDRY / PANTRY

- 20mm recycled glass benchtops
- Low VOC custom cabinetry
- Tiled splashback
- Stainless steel insert trough
- Phoenix Taps WELS rated water saving brushed nickel finish sink mixer
- Chrome finish hot and cold tap fittings for washing machine
- 600x300 ceramic floor tile
- In draw laundry hamper

### BATHROOMS

- 20mm recycled glass benchtops
- Low VOC custom cabinetry
- Solid surface basin
- Solid surface bath (design specific)
- LED backlit wall mirror with magnifying panel
- Waterproofing to all tiled areas
- 600x300 ceramic floor and wall tiles to wet areas, full height tiling to 3 walls
- 600x300 ceramic tiled shower base set-in floor
- 2000mm frameless shower screens
- Phoenix taps WELS rated water saving brushed nickel flick mixer
- WELS rated water saving toilet suites

### STUDY

- Low VOC custom cabinetry
- Metabox filing draws
- Tech and storage cupboard

### ELECTRICAL & SAFETY

- Kitchen 4x GPO, 2x surface mounted downlights, 1x telephone point or 1x data point
- Living/Dining 3x GPO, 4x surface mounted downlights, 1x TV point
- Laundry/Pantry 2x GPO, 1x downlight, 1x exhaust fan
- Bedroom/Rumpus 2x GPO, 1x ceiling fan with light
- Study 2x GPO, 1x downlight
- External 2x wall light with sensor, 2x external GPO
- Smoke detectors hard wired with battery backup
- Energy saving LED to all downlights
- Bathroom 1x GPO, 1x exhaust/light/heater, 1x LED backlit mirror

### EXCLUSIONS POA

- Pre-construction design fees
- Excavations of site if required
- Driveway construction
- Transport/Delivery Fees
- Service connections
- Balustrade/handrails

\*Please note: Secondary dwellings, Extension projects and projects under 60m2 do not include solar power systems or water tanks.

# ECOLIV<sup>®</sup>

## Contact us

The EcoHub Display Centre  
1114 Bass Hwy, The Gurdies  
VIC 3984

Phone +61 (3) 5672 5196  
Email [info@ecoliv.com.au](mailto:info@ecoliv.com.au)  
Visit [ecoliv.com.au](http://ecoliv.com.au)

## Join our community

